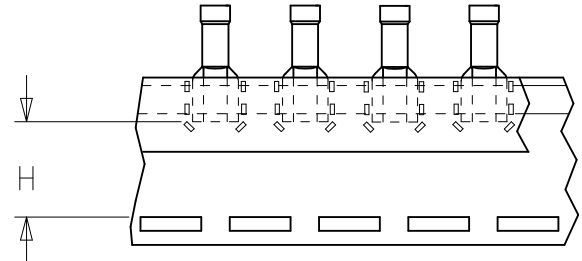
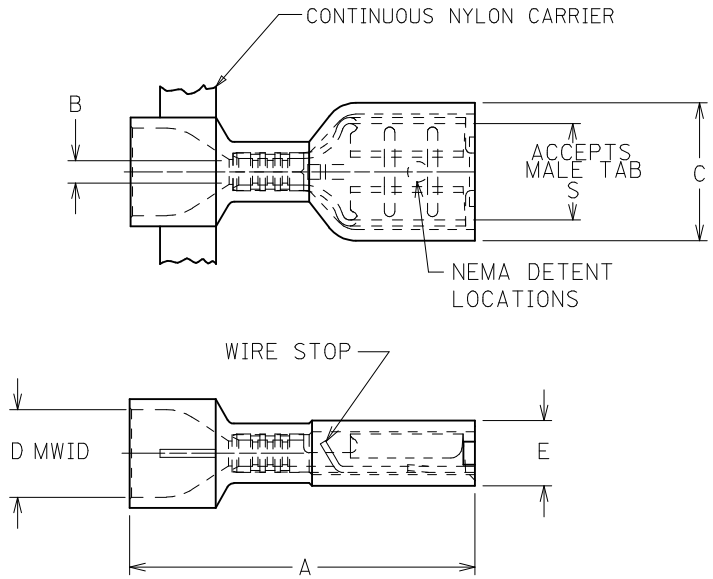


10	9	8	7	6	5	4	3	2	19003				
MATERIAL # LOOSE PCS	MATERIAL # CONTINUOUS	MATERIAL # TAPE MNT	ENGINEERING PART NO.	INS. COLOR	WIRE RANGE AWG	FITS MALE TAB SIZE	STOCK THICK REF	"A" MAX	"B" MIN.	"C" MAX.	"D" MWID	"E" MAX.	"H" ±.02/0.5
190030008	190030009	190030010	AA-2201X	SALMON	22-18	.250x.032 (6.35x0.81)	.016 (0.4)	.94 /23.9	.056/1.42	.380 /9.66	.230 /5.84	.180 /4.58	.56/14.2
NOTE 5	NOTE 5	NOTE 5	AA-2213X	SALMON	22-18	.205x.020 (5.21x0.51)	.016 (0.4)	.86 /21.8	.056/1.42	.316 /8.03	.230 /5.84	.160 /4.07	.60/15.3
NOTE 5	NOTE 5	NOTE 5	AA-2214X	PINK	22-18	.205x.032 (5.21x0.81)	.016 (0.4)	.86 /21.8	.056/1.42	.316 /8.03	.230 /5.84	.160 /4.07	.60/15.3
190030014	190030015	190030016	AA-2202X	SALMON	22-18	.187x.020 (4.75x0.51)	.016 (0.4)	.86 /21.8	.056/1.42	.316 /8.03	.230 /5.84	.160 /4.07	.60/15.3
190030021	190030022	190030023	AA-2203X	PINK	22-18	.187x.032 (4.75x0.81)	.016 (0.4)	.86 /21.8	.056/1.42	.316 /8.03	.230 /5.84	.160 /4.07	.60/15.3
190030027	190030028	190030029	AA-2204X	SALMON	22-18	.110x.020 (2.79x0.51)	.012 (0.3)	.86 /21.8	.056/1.42	.230 /5.85	.230 /5.84	.150 /3.81	.61/15.5
190030033	190030034	190030035	AA-2205X	PINK	22-18	.110x.032 (2.79x0.81)	.012 (0.3)	.86 /21.8	.056/1.42	.230 /5.85	.230 /5.84	.150 /3.81	.61/15.5
190030047	190030048	190030049	BB-2206X	BLUE	16-14	.250x.032 (6.35x0.81)	.016 (0.4)	.94 /23.9	.079/2.00	.380 /9.66	.260 /6.60	.180 /4.58	.56/14.2
NOTE 5	NOTE 5	NOTE 5	BB-2215X	BLUE	16-14	.205x.020 (5.21x0.51)	.016 (0.4)	.86 /21.8	.079/2.00	.316 /8.03	.260 /6.60	.170 /4.32	.60/15.3
NOTE 5	NOTE 5	NOTE 5	BB-2216X	AQUA	16-14	.205x.032 (5.21x0.81)	.016 (0.4)	.86 /21.8	.079/2.00	.316 /8.03	.260 /6.60	.170 /4.32	.60/15.3
190030053	190030054	190030055	BB-2207X	BLUE	16-14	.187x.020 (4.75x0.51)	.016 (0.4)	.86 /21.8	.079/2.00	.316 /8.03	.260 /6.60	.170 /4.32	.60/15.3
190030059	190030060	190030061	BB-2208X	AQUA	16-14	.187x.032 (4.75x0.81)	.016 (0.4)	.86 /21.8	.079/2.00	.316 /8.03	.260 /6.60	.170 /4.32	.60/15.3
190050010	190050014	190050015	C-2265	YELLOW	12-10	.250x.032 (6.35x0.81)	.018 (0.5)	1.04 /26.4	.144/3.65	.380 /9.66	.275 /6.98	.290 /7.37	.51/12.9



CUSTOMER DRAWING

1. MATERIAL: BRASS
2. FINISH: ELECTRO-TIN PLATING
3. INSULATION: NYLON
4. MWID= MAXIMUM WIRE INSULATION DIAMETER
5. CONSULT FACTORY FOR AVAILABILITY
6. PART IS ROHS COMPLIANT.

<b>CORRECTED MAT'L NO</b> EC NO: IFC2016-0481 DRAWN: GROSASO1 2015/09/30 CHKD: JMACNEIL 2015/09/30 APPR: JMACNEIL 2015/10/05	<b>QUALITY SYMBOLS</b> ▽=0 ▽=0	<b>GENERAL TOLERANCES (UNLESS SPECIFIED)</b>		<b>DIMENSION STYLE</b> IN/MM		<b>SCALE</b> ---	<b>DESIGN UNITS</b> INCH	THIRD ANGLE PROJECTION
		mm	INCH	DRAWN BY	DATE	<b>FULLY INSULATED QUICK DISCONNECTS EXPANDED FLARE</b>		
		4 PLACES ± ---	± ---	RCM	1994/06/17			
		3 PLACES ± ---	± ---	CHECKED BY	DATE	<b>MOLEX INCORPORATED</b>		
2 PLACES ± ---	± ---	JM	1994/06/17					
1 PLACE ± ---	± ---	APPROVED BY	DATE	<b>SD-19003-006</b>				
ANGULAR ± ---°		FP	1994/06/17			DOCUMENT NO.	SHEET NO.	
DRAFT WHERE APPLICABLE MUST REMAIN WITHIN DIMENSIONS		<b>SEE CHART</b>		1 OF 1				
THIS DRAWING CONTAINS INFORMATION THAT IS PROPRIETARY TO MOLEX INCORPORATED AND SHOULD NOT BE USED WITHOUT WRITTEN PERMISSION								