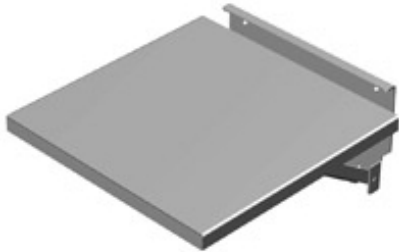


## Fold Down Shelf

### Features



- Supports various equipment used temporarily to service/program switchgear inside enclosures.
- Mounts with bolts through doors or sides.
- Supports up to 100 lbs weight capacity.

Part No.	Finish	Work Surface	
		W	D
<b>FDS1212GY</b>	ANSI 61 Gray	12.00	12.00
<b>FDS1818GY</b>	ANSI 61 Gray	18.00	18.00
<b>FDS2424GY</b>	ANSI 61 Gray	24.00	24.00
<b>FDS2424LG</b>	RAL 7035 Light Gray	24.00	24.00



*Data subject to change without notice*